



Summer 2010

Adult Day program providing hi-tech fun & games

Approaching the Burnt River Bowling Alley, a visitor is struck by the absence of the sound of rolling thunder and crashing pins.

The *Burnt River Bowling Alley*? Is there such a thing? There certainly is, according to the Community Care Adult Day program participants.

Since January, clients, staff and volunteers in the agency's Adult Day program have enjoyed bowling, tennis and other video games offered through a recently-purchased Wii electronic system.

The program participants are experiencing fun and mobility activities and are examples of a market for the gaming system that its developer, the Nintendo company, likely never anticipated when the Wii was invented a few years ago. However, it turns out that young people are not the only ones enjoying the aspects of playing the popular video games that Wii systems offer.

All four of Community Care's Adult Day program centres (Bobcaygeon, Burnt River, Fenelon Falls and Omemee) are using Wii systems with tremendous results, says Program Supervisor Rosanne Moloney.

"Everyone is loving it. They're bowling up a storm, and both staff and clients are finding use of the systems to be very beneficial in



Adult Day program client Bert Macey, along with program staff Ilona Filc and Somerville volunteer George Heath enjoy an electronic bowling match using the Wii console system at Burnt River.

many different ways," Rosanne says.

Recent medical findings have shown that when some people, including those with mobility

restrictions and physical challenges, pick up the controller of a video game or play a virtual reality game, their motor skills

(Continued on P. 2)

New - One phone number to serve you better. See story on P. 2!

Fun and games at Adult Day programs

(From P. 1)

are strengthened and stimulated. It's not every day that we imagine ourselves snowboarding down a ski slope or playing an electric guitar like a rock music star. However, some doctors are indeed prescribing such activities for stroke recovery patients and other individuals.

Findings suggest that the physical therapy of arms, wrists and legs provided by many video games such as the Wii is a good rehabilitation exercise. The low-intensity games such as video bowling help participants re-learn movements, or keep muscles toned.

The video gaming rehabilitation studies that are currently recommending such activity followed physical therapy activities using robots and computer programs. Physicians and scientists see many advantages to such activities for the elderly and stroke victims. It will free up therapists' time by performing repetitive exercises. If the human

therapists are free from the more tedious end of therapy, they will be able to focus on more challenging cases.

The positive medical advantages to participants in the Adult Day program are attractive reasons to play the games, but upon spending some time with the players, it is also very obvious that there is a great element of old-fashioned fun to the activities.

Community Care's Adult Day programs provide a wide range of social, physical and recreational activities designed to meet the special needs of each client. The service is for people who are experiencing difficulty managing the activities of daily living due to physical or memory impairment, who experience loneliness, depression or poor nutrition, or who are under the care of families needing some form of regular respite from their caregiving role. For further information, contact Rosanne Moloney at 324-7323. She would be pleased to meet with people interested in how the Adult Day program can help!

(705) 324 - 7323 is all you need to remember

One phone number will serve clients and the public better

In a development designed to provide efficient customer service with the added benefit of saving money, Community Care has streamlined its telephone system throughout the organization. People calling the agency now only need to know one phone number in order to be connected with any Community Care service.

Dialling 705-324-7323 (toll-free throughout the City of Kawartha Lakes) will connect callers with the agency's central reception desk. One transfer from there will connect the caller with the desired staff person, as all agency staff now have their own dedicated extensions through the main phone number. There are also extensions for the reception areas in Bobcaygeon and Fenelon Falls offices as well as the Community Health Centre that is

located in Lindsay and is serving its new clients who are from areas throughout the City.



Community Care receptionist Judy McWade awaits your call!

In the past, each agency office has had its own unique phone number. This not only meant that some clients had to keep track of more than one number, but costs of maintaining the separate lines were significant. The move to one universal number will save money and should mean faster communications to the staff, says Community Support Services Director Joan Skelton.

Joan explains: "The move will help us connect clients to the appropriate staff quickly, and we will be able to promote and advertise one number in our information material and public information sources such as the telephone directories."

Walk the Rotary Trail in support of Community Care!

Care Walk planned as part of Silver Anniversary events

Lace up your shoes and get ready to support Community Care while working on your fitness level and enjoying one of the city's great trails. If that sounds like an all-round good time, consider taking part in the 2010 Care Walk, presented by Community Care and the Rotary Club of Lindsay.

The event takes place in Lindsay on Saturday,

Aug. 28. Utilizing the Rotary Trail portion of the Victoria Rail Trail, participants will walk any and all portions of the 1.6-km section. Pledges in support of their participation will go towards programs and services offered by Community Care in the City of Kawartha Lakes. The event starts at 10:30 a.m. on Aug. 28, with registration from 9:30 a.m..

"The Care Walk is a great

partnership between Community Care, the Rotary Club and our many corporate sponsors of the event," says Rotarian Helen Robinson, who is a member of the Community Care Silver Anniversary Committee, as well as a caregiver support co-ordinator.

The Walk is sponsored by Mark V. Wilson Construction, Adelaide Place retirement home,

Cardinal Signs and Moynes Ford (both of Lindsay), and Sobey's grocery store of Fenelon Falls.

A brochure with a pledge form for people interested in participating in the Care Walk is inserted into this newsletter. For more pledge forms, to register as a participant or for further information, contact Community Care, or stop in to any agency office!



Getting a head start on the Rotary Trail for the Community Care "Care Walk" in August are Anne Walker, Marian Brumwell, Joan Magahey and Judie Schell. Pledge forms for those interested in taking part in the walk are available at Community Care offices, or by calling 324-7323, ext 222.

AN EASY WAY TO HELP

Remember to donate grocery store receipts to Community Care. In **Bobcaygeon**, we collect slips from *Valumart* and *Foodland*. You can drop your receipts off at the Community Care office in Bobcaygeon. This fundraiser provides important dollars to support Community Care's work.

THANK YOU

Thanks to the **United Way for the City of Kawartha Lakes** for its ongoing support.

The United Way provides funding for many of Community Care's most vital programs.

Community Care is proud to be a United Way member agency. Please support the fall campaign.



Village Housing development is on the rise!

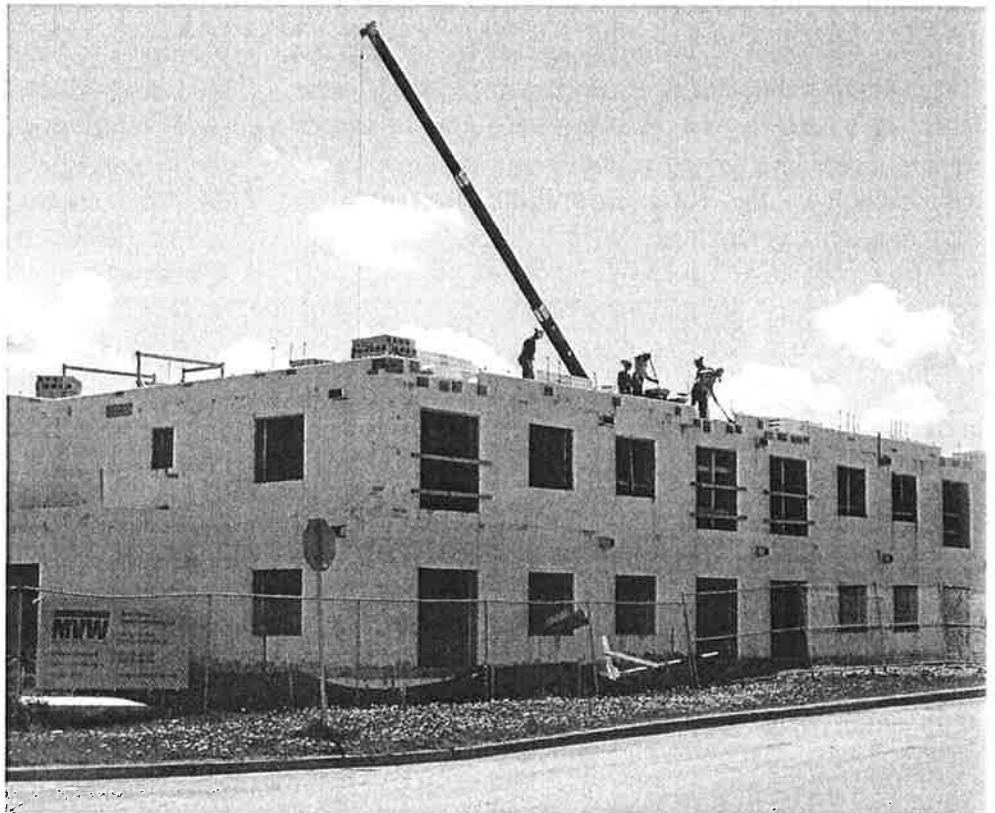
A significant construction project in the Town of Lindsay has attracted a good deal of attention through the spring and summer, as the building of the Community Care Village Housing development progresses.

Now that the Village Housing apartment complex on Victoria Avenue in Lindsay is rising from the ground, the hard work of multi-year planning and steadfast retaining of a vision for supportive housing seems well worth the effort, says Community Care Chief Executive Officer Valmay Barkey.

“The 70-unit apartment building is evidence to what can be accomplished in partnership with others in the community,” Valmay says.

Funding for the Village Housing project was announced in the summer of 2009. The 70-affordable housing development will feature 51 one-bedroom units for seniors and persons with disabilities. The rental costs of those units will be lower than market rate. There will be 19 two-bedroom units at market rent. Also included will be common element space for resident gatherings supported by a kitchen which will be available for celebrations, communal dining and other activities.

There will be many special features of the development. Sixteen units will be modified for accessibility. There is also a commitment to use advanced



The Village Housing project currently under construction on Victoria Avenue between Durham and Melbourne streets in Lindsay is attracting attention. The development is slated for opening early in 2011.

“green” building technologies such as insulated concrete walls and other “green” adaptations. The firm of Mark V. Wilson Construction of Lindsay has been hired to construct the project.

Eligibility requirements for tenancy have been established in collaboration with the City of Kawartha Lakes housing department and other community organizations. Age 60 is currently the minimum age for eligible tenants, with unique disability circumstances being recognized as eligible for 17 of the units. Clients who are being supported by the Kawartha Participation Project and Community Living Kawartha Lakes and who meet service priority

requirements are also being considered for the housing project.

A project “fact sheet” has been developed for people wishing to obtain further information about the development and its features. Any potential tenants eligible for rental assistance should register with the City housing department (324-9870) to ensure that their name is on the housing wait list. Then, those requiring service should contact Community Care Supportive Housing Manager Michal Wallen. She will help a senior complete the service priority application, or direct people to the appropriate agency (such as KPP) who may also be able to meet the service need.

Community Health Centre Update

Primary care facility embraced by public

The response to the services now available to local residents at the Community Health Centre (CHC) for the City of Kawartha Lakes has been impressive.

Since its official opening in December 2009, more than 850 patients have been registered as clients with the CHC. At that rate, officials say that the initial target of 1,200 clients in the first year of operation will likely be surpassed.

The CHC, which is located at 108 Angeline St. S. in Lindsay, provides primary health care services for “orphaned” patients (people without a family doctor or primary health care provider). The support is provided through a collaborative team approach by the physicians, nurse practitioner, nurses and other health care professionals employed at the CHC.

In addition to offering the primary health care team for residents in need of primary care, the CHC is integrated with Community Care’s support services, enabling it to offer a broad range of programs to patients. Initiatives such as Community Care’s CHAP (Cardiovascular Health Awareness Program), the agency’s Stroke Survivor Support Group and others are now managed from the CHC.

The CHC also has an administrative support team. All



City of Kawartha Lakes Mayor Ric McGee (left) joined Community Health Centre physicians Dr. Michelle Snarr and Dr. David Klein at the opening of the facility late last year. Mayor McGee praised Community Care’s dedication and collaboration with other local health care providers in order to make the CHC become reality.

staff work collaboratively with the Community Support Services personnel at the agency’s administrative office (34

Cambridge St. S.) and the local offices in Bobcaygeon, Fenelon Falls and Kirkfield, as well as non-staffed locals.

New Vision, Mission and Values

The new Vision, Mission and Values recently adopted by Community Care reflect the agency’s expansion of health-related and social support services in the past couple of years. The organization’s Board of Directors recently approved the new statements:

Vision: ... a healthy community through care and support.

Mission: Community Care City of Kawartha Lakes is a leader in the collaborative design and delivery of integrated and responsive health and support services that respect individual choice, dignity and independence.

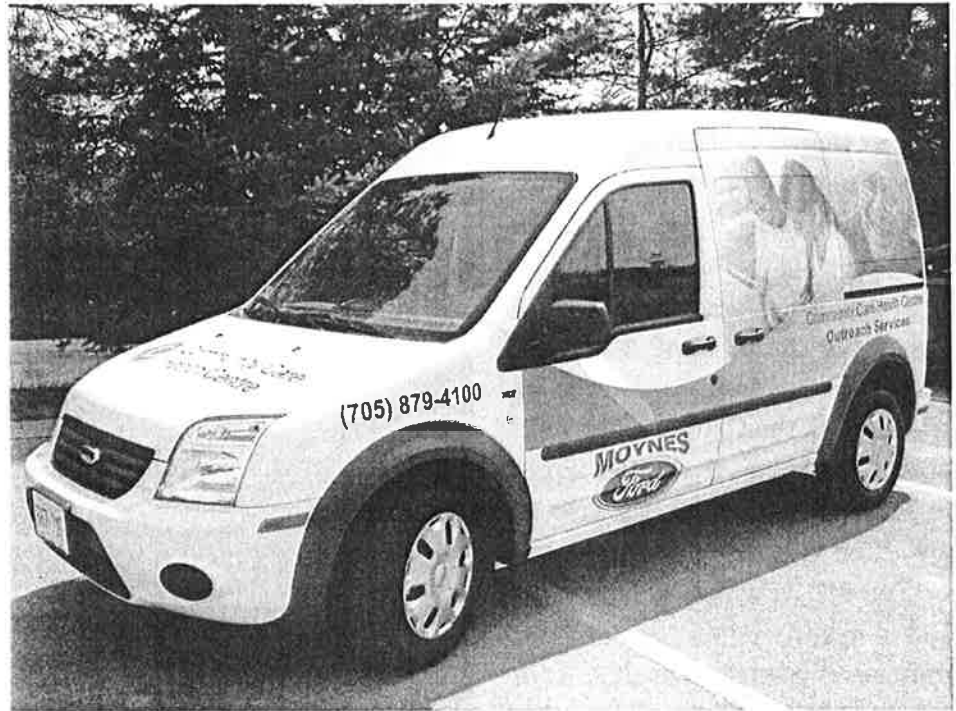
Values: Compassion Accountability Respect Excellence

Outreach services going mobile with new van

When Community Care was given approval from the Province to open the Community Health Centre in the City of Kawartha Lakes, one of the cornerstones of its service plans was ensuring that health care would reach into outlying communities in the municipality.

The plan for presenting CHC services for the City was always through a three-pronged approach: having a main site centrally located in Lindsay; having some part-time satellite offices in other outlying municipalities, and; utilizing a mobile unit to allow CHC staff to reach some of the rural or remote areas of the municipality.

With the recent acquisition of a mobile outreach van, such service delivery to rural areas has become more achievable. CHC staff are excited about taking some



Keep your eyes open for the new Community Care mobile outreach van, which will be utilized for the delivery of Community Health Centre services to rural areas throughout the municipality.

services “on the road” in the near future. The agency is currently assessing the community’s needs and will work, as always,

collaboratively with other local health care and service providers in the City in order to deliver care efficiently and effectively.

AEDs installed at CHC and in non-emergency transfer vans

Clients of Community Care and residents of the City of Kawartha Lakes in general should feel secured by the recent installation of automated external defibrillators in three of the agency’s specialized transit vehicles, as well as at the Community Health Centre.

The Public Access Defibrillators (PADs) were obtained for Community Care through the Mikey Network Foundation, with the assistance of the City’s Emergency Medical Services department. Thanks to the diligent efforts of EMS manager Keith Kirkpatrick in obtaining the PADs through the Mikey Network, the City of Kawartha Lakes has more PADs per capita than any other region in Ontario.

The PAD program legally protected under the Ontario Good Samaritan Act. People are covered from civil liability when they attempt to save a life using an AED.



CHC staff Melinda Cooper and Lauren Gogol with the Public Access Defibrillator that’s now available at 108 Angeline St. S.



Displaying the spirit and enthusiasm that have always been trademark characteristics of their local, volunteers for Community Care Kirkfield celebrated another busy year at the annual general meeting held in May. New license plate frames and lapel pins marking the agency's 25th anniversary were distributed to the volunteers.

Organization's roots celebrated at Kirkfield AGM

Everyone knows that the City of Kawartha Lakes is made up of many unique communities, but as far as Community Care is concerned, there's always been something about the Kirkfield area that makes it special. As the home of where many different agency services had their origin a quarter of a century ago, Kirkfield is an important and valued local program of the agency.

"This is where many of our agency's programs were born, and history has shown that when Kirkfield has started something, it has thrived, grown, flourished and sustained over the years," Community Care Chief Executive Officer Valmay Barkey told the many volunteers and staff gathered at Kirkfield's 2010 annual general meeting in May. Valmay was guest speaker at the event that afforded her an opportunity to reflect and reminisce on the agency's growth since its inception 25 years ago.

Her short trip down *Memory Lane* included a summary of how the original New Horizons for Seniors grant (a much-appreciated \$15,000) for startup funding of the first Community Care services was submitted through a volunteer group of concerned citizens.

What began from those grassroots efforts has grown into an agency that plays a significant role of health care and support services delivery throughout the City of Kawartha Lakes. The contributions that Community Care makes to health care provision in the province represent "tremendous value," Valmay said. "From humble beginnings, we now have a wide range of health and support services, plus the new Community Health Centre.

"You have made this community better, healthier, and you have been a part of the history of Community Care."

Community Care Health and Support Services is a leader in the collaborative design and delivery of integrated and responsive services that respect individual choice, dignity and independence.

We are a charitable, non-profit, volunteer-based organization. Monthly or yearly donation arrangements are possible, as well as bequests, planned giving or special occasion donations. Gift certificates for all paid services are also available. Our Registered Charitable /BIN number is 10552 6248 RR 0001.

For details, call (705) 324-7323 or 1-800-461-0327 or contact your local Community Care office.

Did you know...

There's a new way to "go" to Toronto

Many local residents may not be yet aware of the newly expanded GO bus/train service that gives travellers and commuters an affordable option.

Since late last year, the province's GO transportation service has been travelling from Peterborough to the Oshawa train station 10 times per day - with a stop at the Highway 115/35 carpool lot ("Clarington") one km south of Pontypool.

The bus comes from Peterborough and takes just

37 minutes to get from the Clarington stop to the Oshawa GO train station. A person getting the bus at 115/35 will arrive at Union Station in downtown Toronto in less than 90 minutes - at a cost of \$11.45 for one-way trip. There are also 10 return trips made each day.

A full GO train and bus service schedule, along with fares, is at www.gotransit.com

Transportation survey designed to measure local interest in bus service

The transportation needs of local residents are a high priority for Community Care City of Kawartha Lakes, and the challenges that many residents face are under constant consideration by the agency.

The agency is a member of the City of Kawartha Lakes' Transit Advisory Committee, as well as a participating partner in a local group examining possible ways to link residents with the GO (Government of Ontario) transportation service.

Since the new year, GO has operated a bus route that runs several times a day from Peterborough to the Oshawa GO train station. There is a pickup and dropoff point at the commuter parking lot at Highways 115 & 35, just one km south of the City

boundary. Local residents who can get to the GO bus stop can then have affordable and quick transportation to Toronto or any of the GTA municipalities that are accessible through the GO train routes.

The challenge for some people is getting transportation from their City of Kawartha Lakes location to the GO bus stop. The Transit Advisory Committee has been considering the matter for several months, and thus struck the link sub-committee. In addition to Community Care, the sub-committee has representation from the local Boys and Girls Club, MPP Rick Johnson's constituency office, the Lindsay & District Chamber of Commerce and local transportation companies.

In addition, a local private transportation provider is currently conducting a feasibility study, with the goal of determining if there is enough local interest to warrant offering transit service from the City to the GO bus stop at 115/35. The study is designed to also promote the stop among potential user groups, such as seniors and college students.

George Howden, a former City resident, has secured funding to conduct a transportation survey in the Lindsay-Ops transit market. His survey is available through Community Care or by contacting him at gflowden@yahoo.ca.

Mr. Howden's survey will determine the level of interest in a shuttle service that would transport people from this area to the GO stop at 115/35. Meanwhile, he and officials from other local transit providers will work to promote and educate the public about the schedule and fees for the service that is available.

**Live safely and independently
in your own home**



Lifeline has provided peace of mind to seniors and their families for over 30 years.

Just press the help button and you are connected to a caring professional in seconds!
Help is on the way.

How Lifeline Works

Subscriber pushes their help button



The Lifeline Communicator Unit dials our Response Centre



Lifeline summons immediate help and ensures it arrives promptly



A Response Centre Associate assesses the situation

Call Community Care City of Kawartha Lakes Lifeline
1-800-LIFELINE
1-800-543-3546
www.lifeline.ca



LINDSAY – OPS TRANSIT MARKET SURVEY

Date of Survey: 2010/____/____
mo da

1. Identification

- a. Name: Mr. Mrs. Miss _____
- b. Address: _____
- c. Telephone: (____) _____
- d. Email: _____
- e. Age Group 12 – 17 18 – 65 65+
- f. I am a*: College Student Commuter Low Income Resident**
 Senior Citizen Other Resident.
(*Mark all that apply, ** Receiving GAINS, GIS, ODSP, OW or earning < \$11/hr.)

2. Mobility

- a. I currently have currently do not have a valid drivers licence.
- b. I presently own or lease presently do not own or lease a licenced motor vehicle.
- c. I presently have access to presently do not have access to a licenced motor vehicle.

3. Mode of Transportation

- a. Local
For my local transportation within Lindsay – Ops, other than walking, I most often use the following mode of transportation:
- bicycle
 - owned or leased vehicle
 - other person's vehicle (friend, relative etc.)
 - Community Care transportation
 - taxi or limousine
 - Lindsay Transit
- b. Regional
For my out-of-town transportation outside Lindsay – Ops but within Ontario, I most often use the following mode of transportation:
- owned or leased vehicle
 - other person's vehicle (friend, relative etc.)
 - Community Care transportation
 - taxi or limousine
 - chartered coach (e.g. To Rama)
 - scheduled coach (Can-Ar)
 - scheduled coach (GO Transit from Clarington North)
- c. Frequency
I travel out-of-town by the above mode approximately ____ times per month.

4. Travel History

4. Within the last month, I have traveled to the following areas:

- | | |
|---|-------------|
| <input type="checkbox"/> Peterborough | _____ times |
| <input type="checkbox"/> Lakeshore East (Clarington, Oshawa, Whitby, Ajax, Pickering) | _____ times |
| <input type="checkbox"/> Toronto | _____ times |
| <input type="checkbox"/> Toronto Airport | _____ times |
| <input type="checkbox"/> Elsewhere in GTA | _____ times |
| <input type="checkbox"/> Rama | _____ times |
| <input type="checkbox"/> Elsewhere in Ontario | _____ times |
| <input type="checkbox"/> Elsewhere in North America | _____ times |

5. For the above out-of-town travel within the last month I have used the following public travel services:

- | | |
|---|-------------|
| <input type="checkbox"/> Can-Ar Coach | _____ times |
| <input type="checkbox"/> GO Transit (from Clarington North) | _____ times |
| <input type="checkbox"/> Community Care Transportation | _____ times |
| <input type="checkbox"/> Taxi or limousine | _____ times |

5. GO Connector

a. Use

If there were a shuttle bus service from your home or from a nearby bus stop in Lindsay/Ops connecting with the GO Bus at Clarington North, and the fare were reasonable, would you use such a service?

- Yes, would use. No, would not use.

b. Frequency

If you would use such a service, approximately how many times per month do you think that you would use it?

_____ times per month

c. Day

If you would use such a service, on which days of the week would you use it most?

- Weekdays (Mon. to Fri.) Weekends (Fri. eve to Sunday eve)

d. Depart

If you would use such a service, at which times of the day would you most often prefer to depart Lindsay?

- 5 to 7 a.m. 7 to 9 a.m. 9 to 11 a.m. 11 a.m. to 1 p.m.
 1 to 3 p.m. 3 to 5 p.m. 5 to 7 p.m. 7 to 9 p.m.

e. Return

If you would use such a service, at which times of the day would you most often prefer to return to Lindsay?

- 7 to 9 a.m. 9 to 11 a.m. 11 a.m. to 1 p.m. 1 to 3 p.m. 3 to 5 p.m.
 5 to 7 p.m. 7 to 9 p.m. 9 to 11 p.m.

d. Fare

Bearing in mind that the proposed service would be privately operated, and ridership may be low at times, how much could you afford to pay as a one-way fare for the above shuttle bus trip including tax?

- \$9.00 \$10.00 \$11.00 \$12.00 \$13.00 \$14.00

Please return completed surveys to Community Care Health and Support Services
34 Cambridge St. S., Lindsay ON K9V 3B8

25-Cent Challenge winners

The five latest winners in the year-long “25-Cent Challenge” being held by Community Care are: Vicky Baxter and Jim Outram of Bobcaygeon, Jack Strehorn and Claire Golbeck of Fenelon Falls, and the Kirkfield Diners’ Club. Each wins a one-ounce silver bar.

Throughout the 2010-11 fiscal year, the agency will make five draws for one-ounce bars of pure silver at the end of each three-month period. The next draw will be Sept. 30, 2010.

People or groups receive an entry into the draw each time that a \$10 roll of quarters is donated to the agency through the 25-Cent Challenge. Every entry remains in the grand prize draw for a 10-ounce silver bar at the end of the fiscal year (March 31, 2011).

Quarter rolls can be turned in at any Community Care office. People can also pick up a new wrapper to fill.

Each office also provides a coin collection box for supporters to deposit spare quarters. The goal is to collect 25,000 quarters (\$6,250) over the year. Funds raised will support the agency’s specialized transportation program.

Special Delivery

Meals on Wheels becomes a Christmas family affair

Ensuring the delivery of one of Community Care’s most well-known and appreciated programs has always been important at the agency. For Local Program Manager Kerri Daley and her family, however, Meals on Wheels took on greater significance this past Christmas. It was an experience that none of them will forget.

Even though it was Christmas Day and a time when many people concentrate on being with family and friends rather than work-related matters, Kerri wanted to ensure that clients who were depending

upon Meals on Wheels that day were not missed. At the same time, she hoped to be able to give the regular program volunteers the opportunity to be with their own families on Christmas. The result was something that she and her family had done before – the Daleys would deliver Meals on Wheels that day.

“We had 17 households with clients who were not able to get out to their own families that day, or do not have families,” Kerri explained. “They loved the fact that Community Care still delivered on Christmas Day, and my kids loved it as well.”

Kerri, her husband Mike and sons Ryan and Tyler got up extra early to open their presents on Dec. 25. Kerri then went to the Community Care office to start the ovens that cooked the special turkey dinners. Everyone pitched in with delivery, including

Kerri’s parents Joan and Mike Simpson, who are longtime Community Care volunteers.

Food preparation for the Meals on Wheels program in Lindsay was shifted in the new year to the agency’s administration office on Cambridge Street. Meals are prepared with new heating carts from Apetito

Hotserve, the company that supplies the program’s meals.

In prior years, members of the local IODE group in Lindsay have assisted with Christmas Meals on Wheels, and the organization offered once again this year.

“But since I had to come down to the office and cook the meals, I figured that we may as well deliver and give all volunteers the day off,” Kerri added. “I think it definitely gave Ryan and Tyler an appreciation for what they have, and what others have. We all felt good about what we were doing.”

The big day wasn’t finished once the meals were delivered, though. The Daleys even managed to host their own family Christmas dinner later that day!

For further information about the Meals on Wheels program, contact any Community Care office at 324-7323. Anyone interested in learning about how to volunteer for this or any of the many different Community Care programs can also speak to an agency representative for further information.



Ready to roll - Ryan, Tyler and Mike Daley, about to head out with Meals on Wheels on Christmas Day.



New Horizons grant assists celebrations

Silver Anniversary designed to honour volunteers

The year 2010 is a special one in the history of Community Care City of Kawartha Lakes, as the agency celebrates its 25th anniversary of providing services for seniors and people with special needs.

Many aspects of the organization have changed and evolved over the past quarter century, but just as many values and commitments have remained constant. Foremost on that list is the important and valued role that volunteers have played throughout the history of the organization.

To help celebrate volunteers during its Silver Anniversary, Community Care has received funding from the federal government New Horizons for Seniors program. This support is enabling the agency to celebrate "25 Years of Caring Volunteers" throughout the 2010-11 fiscal year.

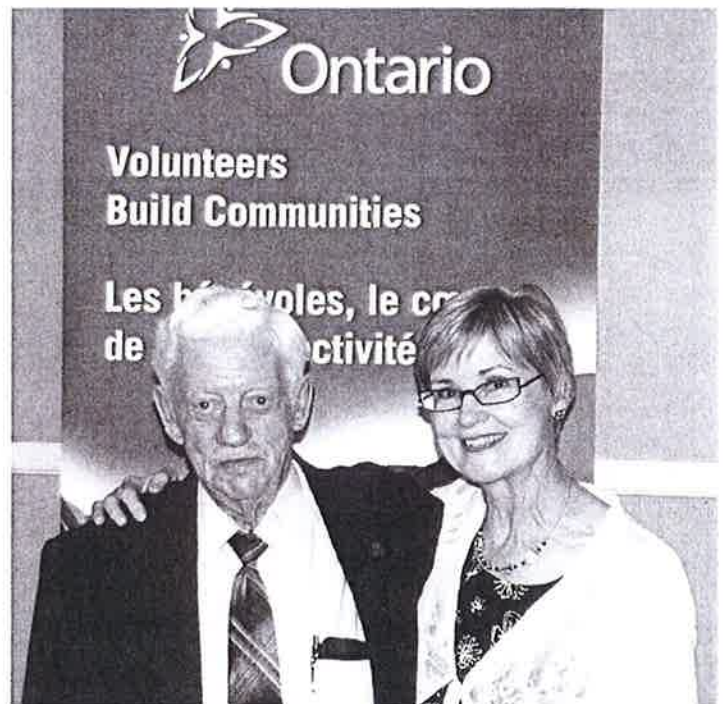
Many special events and activities have been planned to honour the hundreds of volunteers that Community Care is grateful to have. The year-long salute began with the agency's annual Volunteer Appreciation Tea held during National Volunteer Week in April. At that event, more than 200 of our dedicated volunteers were entertained and thanked for their contributions they have made to the agency over the years.

The theme continued at the 25th anniversary banquet held in June at Eganridge Inn. Guest speaker Stuart MacMillan, a longtime social service worker and advocate, saluted the volunteer spirit that was responsible for Community Care's birth in 1985.

The seeds of the organization were actually planted a year or two prior to the 1985 incorporation. It's fair to say that the roots of the agency are deeply planted in the kitchens, church halls and community centres of many towns and villages throughout what was then Victoria County.

Those who sowed the first Community Care seeds were people who saw a need or gap in service provision and who stepped forward to ensure that residents who needed an assist in order to live comfortably at home were provided with the help that they required.

Whether it was in 1985, or right now in 2010, the philosophy of caring enough to help people live at home has never changed!



Quarter-Century Volunteer

Community Care Mariposa volunteer Owen Gray was honoured for 25 years of service with the agency at the Ontario Volunteer Service Awards event held in June in Lindsay. Community Care CEO Valmay Barkey was pleased to be able to thank Owen for his quarter century of volunteer service. The agency is marking "25 years of caring volunteers" in 2010.